

# PARKING FACILITIES



***A DIFFERENT WAY OF LIGHT***



# A DIFFERENT WAY OF LIGHT



Venture Lighting is a worldwide innovator, manufacturer and supplier of energy efficient lighting materials, components, systems, fixtures and controls. Since being founded in 1983 and becoming part of Advanced Lighting Technologies in 1995, Venture Lighting has always been a pioneer in light source technologies. An advocate for industry terms like "LPW" and "Lumen Maintenance", Venture Lighting continues to be a leader in the lighting industry.

#### **An Innovation Leader:**

- Full line of LED lamps, fixtures and controls
- Low glare
- High efficacy
- Thermal management
- Precise optics
- Fixtures that are application adaptable

#### **Customers are assured:**

- The very best technology
- The highest level of service
- Ease of working with
- Dedicated technical and customer support



energy  
saving



longer  
life



superior  
performance



easy to  
install



5 year  
warranty



all  
weather



technical  
support

*"Over three decades of delivering Industry leading, innovative products to support the daily needs of Distributors. That is why we partnered with Venture Lighting! Every day, Venture continues to impress us with prompt shipping, from deep inventories of quality driven, ever evolving, lighting options. The proof is in the product!"*

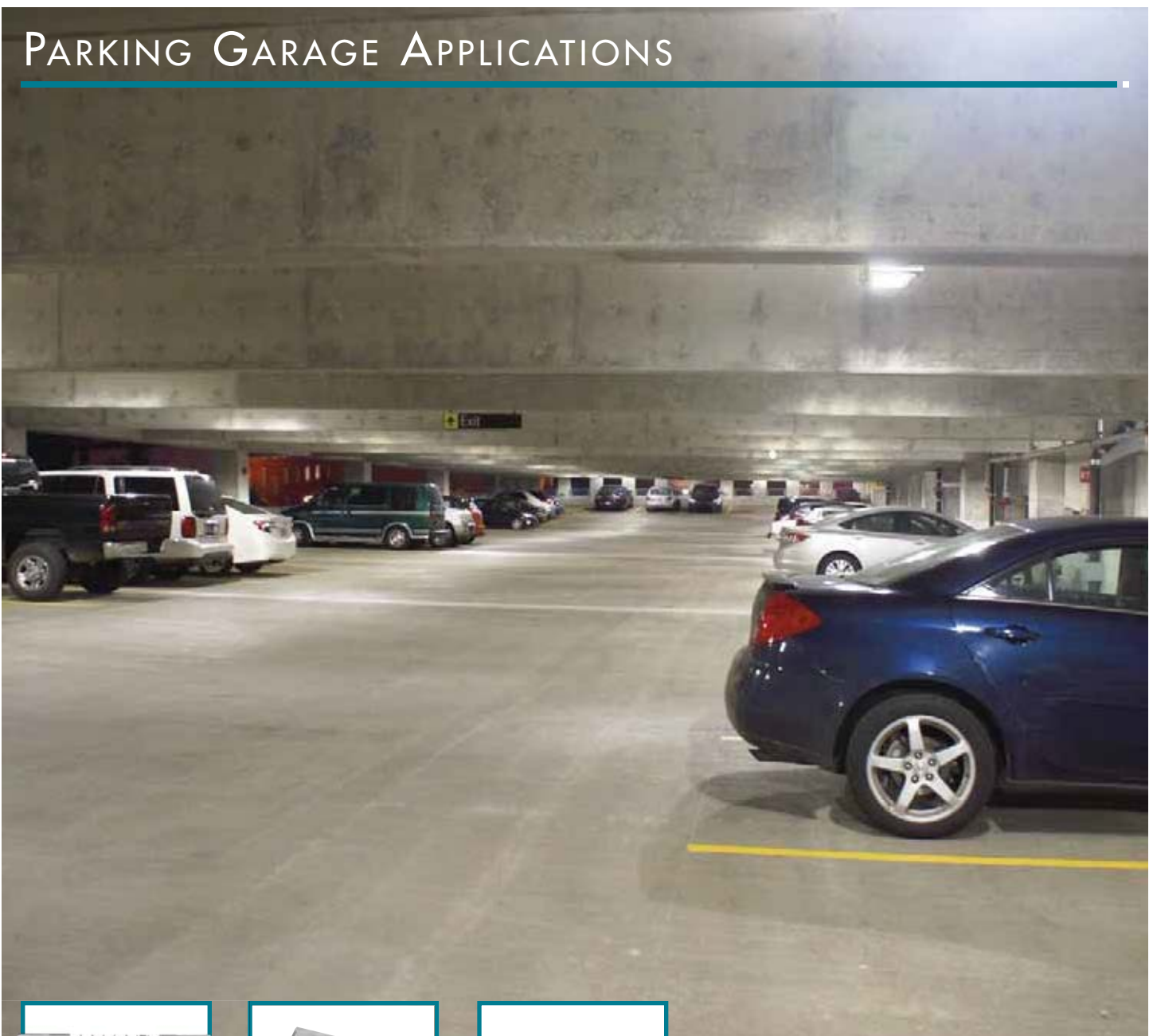
*- Richard Osterhout  
Green Electrical Supply*

# PARKING FACILITIES



*Select Pro® Garage Light*

# PARKING GARAGE APPLICATIONS



## Garage

- Two lumen package options.
- Wattage Selectable
- Color Temperature Selectable
- Integrated Photocell
- Internally mounted battery Backup available
- Surface or pendant mount.



## Canopy

- Available in 54W in 120-277V configurations
- Heavy-duty aluminum housing with a durable powder coat finish
- Occupancy and daylight sensor pre-installed
- Rated for wet locations
- Can be surface or pendant mounted



## Vapor-tight

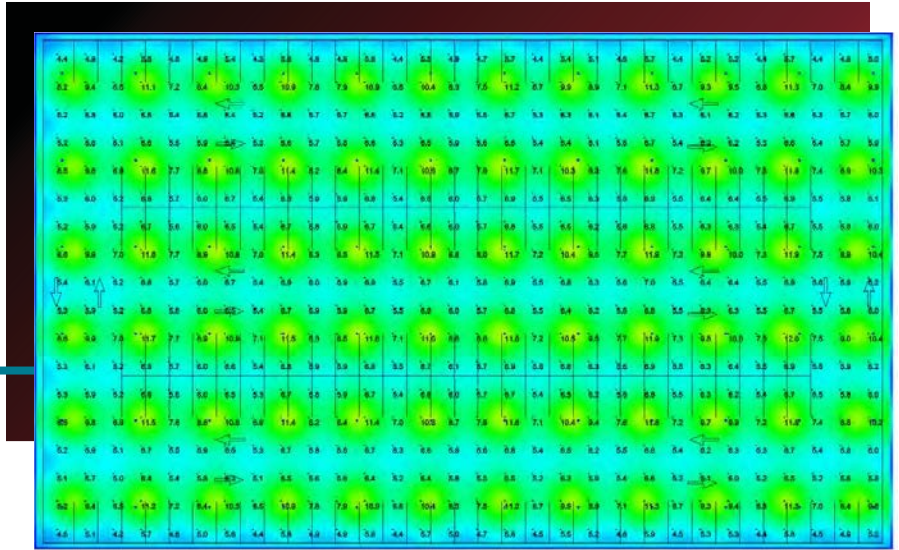
- Available in 4' and 8'
- Wattage Selectable
- Color Temperature Selectable
- Internally mounted battery Backup available
- Optional wet rated sensor available
- Surface mount kit included



# PARKING GARAGE APPLICATIONS

## Select-Pro Parking

Venture Lighting's LED parking garage luminaires are low profile, light weight and easy to install as a surface or pendant mount. High performance, specially designed polycarbonate optics provide up-light to eliminate the "cave effect" and provide superior uniformity at ground level. These LED fixtures are designed to quickly and easily upgrade existing parking garage fixtures and for new construction.



*Computer Generated Rendering  
Fixtures mounted at 10'  
Quantity: 72  
Wattage: 40W (CP40160)  
Fixture Lumens: 5,450  
Average footcandle: 6.90FC  
Max. footcandle: 12.0FC*



### Benefits and Features

- Die cast aluminum housing with powder coat finish
- Quick Install bracket for surface mounting
- Two lumen package available
- Color Temperature Selectable: 3000K, 4000K, 5000K
- Wattage Selectable
- Integrated Photocell
- 160 Degree beam angle for wide distribution
- Knockouts on each side of fixture for simple conduit installation
- Integrated occupancy sensor option
- Integrated battery backup option
- Tamper resistant screws available



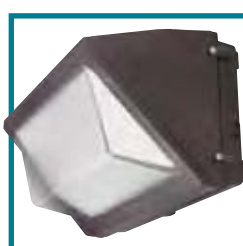
# EXTERIOR APPLICATIONS

---



## Area Lights

- 100W to 300W options available.
- Wattage Selectable
- Color Temperature Selectable. 3000K, 4000K, 5000K
- Type 3 and Type 5 distributions available



## Wallpacks

- Wattage Selectable: 20-80W and 70-150W, 120-277V
- CCT Selectable: 3000K, 4000K and 5000K
- Standard fixture color is bronze, custom colors available upon request
- Integrated photocell included
- Glass lens



## Floods

- Wattage Selectable: 35-50W and 65-90W, 120-277V
- CCT Selectable: 3000K, 4000K and 5000K
- Rugged die cast housing with a durable powder coat finish
- Integrated photocell included



# EXTERIOR APPLICATIONS

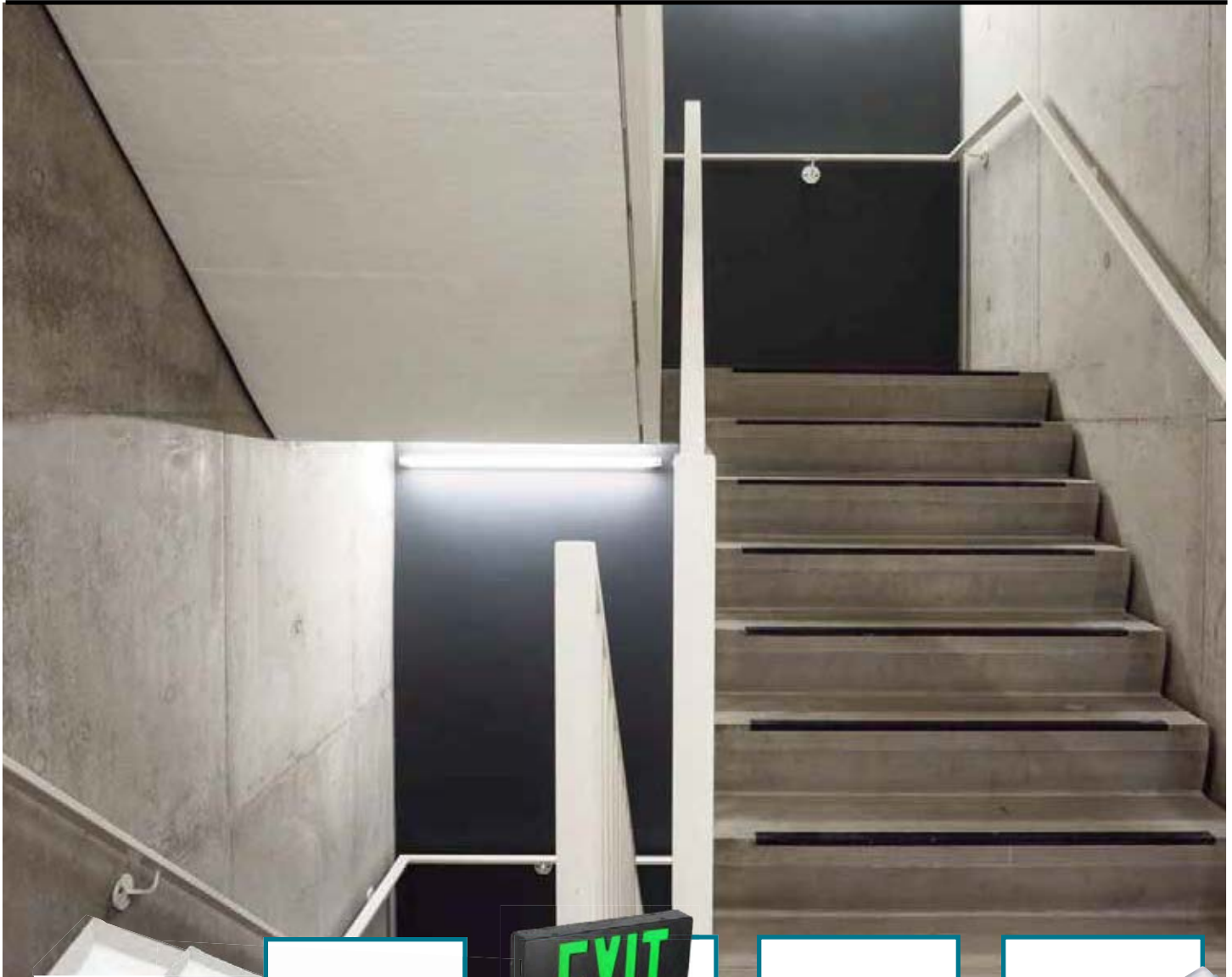
---

## **Benefits and Features**

- Wattage Selectable, 100 - 300W options available
- Color Temperature Selectable. 3000K, 4000K, 5000K
- Type 3 and Type 5 distributions available
- UL listed for use as an Area Light and Flood
- Rugged die cast aluminum housing
- Screw-in programmable motion sensor option
- Toolless entry into driver compartment
- Fixture + mounting arm kits available
- Multiple mounting accessories available
- cULus Listed



# STAIRWELL APPLICATIONS



## Wrap

- Light weight desing allows for easy installation
- cULus rated for damp locations
- 3X longer life than traditional technology, reducing maintenance costs
- Universal 120-277V 50/60 Hz Input
- 0-10V Dimming Standard



## Exit Signs

- Single or double faced
- Red or green letters
- White or black housing
- Internally mounted battery Backup available
- Manual or self-test options
- Battery backup
- Removable direction indicators



## Linear Strip

- Available in 4ft and 8ft with field-adjustable wattage and CCT switches
- Designed for upgrading existing T8 and T12 fluorescent strip light fixture
- Damp and dry rated; supplied with a low glare diffuse lens
- Factory installed battery back-up options available



## Vapor Tight

- Available in 4' and 8'
- Wattage Selectable
- Color Temperature Selectable
- Internally mounted battery Backup available
- Optional wet rated sensor available
- Surface mount kit included



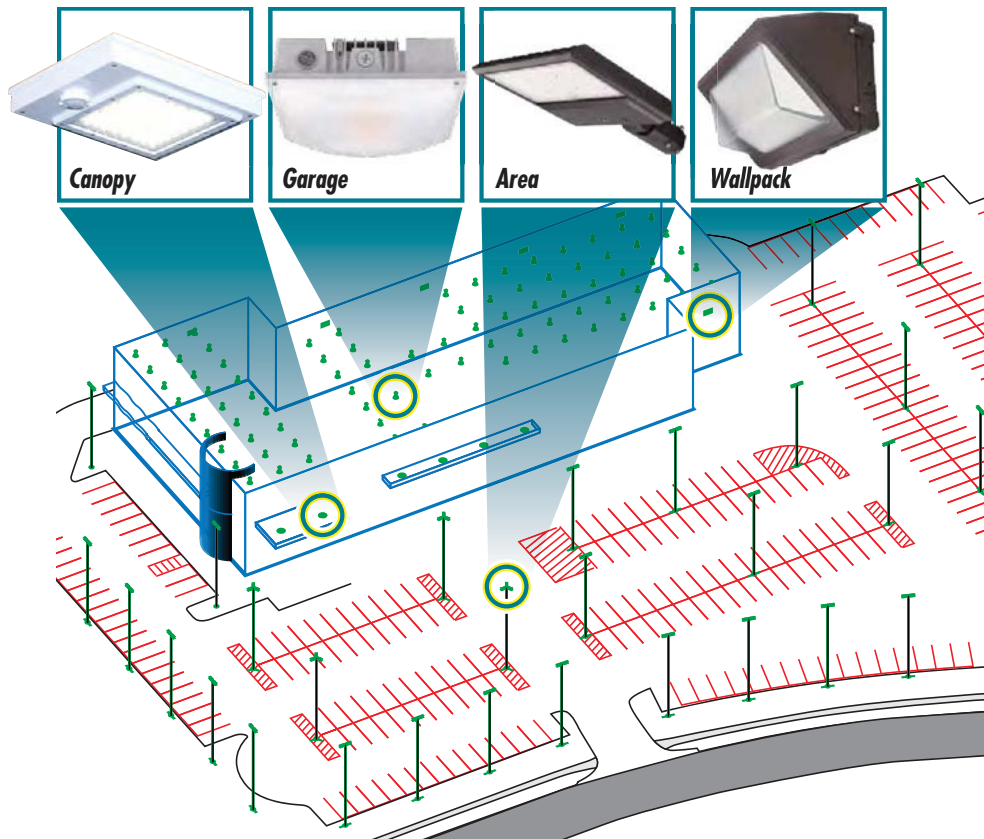
**VENTURE**  
LIGHTING

**A DIFFERENT WAY OF LIGHT**

Tel. **800-451-2606** • [VentureLighting.com](http://VentureLighting.com)



# LIGHTING AN ENTIRE FACILITY



## Lighting All Applications

For every area of a parking garage, or any other site or facility, Venture Lighting has a wide range of LED lighting products that can meet the need. Whether it is new construction, or upgrading existing lighting, Venture LED luminaires are the Lighting Solutions to any application.

*"Over the fifteen years that I had been selling, and now buying the Venture line for our company I've found them to have a top tier product. The Venture name is trusted by both end users and specifiers."*

*- Michael Cooper*

*Senior Procurement Analyst  
Shepherd Electric Supply*

# RETROFIT OPPORTUNITIES



## Retrofit Lamps

- Available in 12W, 18W, 24W, 27W, 36W, 45W, 54W, and 100W
- 5000K, 4000K and 3000K color temperature versions available
- Up to 5 times longer life and 80% energy savings compared to 50W through 400W metal halide lamps
- Improved reliability and reduced maintenance costs
- Universal Burn Position - Omnidirectional (base-up/base-down/horizontal operation)
- Easy installation, standard E26, E39 and EX39 bases available
- 5 year warranty
- Integrated driver



## Directional

- Available in 54W and 115W in 120-277V configurations and 4000K and 5000K CCT
- Integrated driver design makes an ideal upgrade from traditional technologies
- Specially designed optic delivers Type V Distribution
- Energy saving replacement for MH or HPS
- Up to 5 times longer life and 80% energy savings compared to HID
- Horizontal burn position
- Easy installation
- Perfect for applications such as area, flood and wallpack lighting



## Lowbay

- Available in 40W in 120-277V configuration and 4000K color temperature
- Energy saving replacement for 175W MH or HPS
- Universal burn position
- Easy installation
- Perfect for applications such as lowbays, canopies, garages, and general illumination
- Standard E26 and EX39 bases available

## HID to LED

Our LED lamps are designed to convert your HID lamps to LED, making it easy to upgrade your lighting without having to completely replace your existing lamps. Our LED lamps are energy-efficient, long-lasting, and provide superior lighting quality compared to traditional HID lamps. Don't settle for subpar lighting any longer. Upgrade to Venture LED lamps today!



NOTES:

---

---

---

---

---

---

---

---





*energy  
saving*



*longer  
life*



*superior  
performance*



*easy to  
install*



*5 year  
warranty*



*technical  
support*

## PARKING GARAGE LIGHTING



**VENTURE**  
**LIGHTING**

# ***A DIFFERENT WAY OF LIGHT***

**(800) 451-2606**

6675 Parkland Blvd., Suite 100

Solon, OH 44139 USA

E-mail: [Venture\\_Lighting@VentureLighting.com](mailto:Venture_Lighting@VentureLighting.com)

**VentureLighting.com**