



Venture Lighting's Line of LED Solutions

*Professional Grade LED
from The Leader in HID*

About Venture Lighting



Venture Lighting International, an Advanced Lighting company, was founded in 1983 as a metal halide, high intensity discharge lamp manufacturing company based in Cleveland, Ohio. Venture Lighting developed innovative, environmentally friendly products designed for a wide range of metal halide lighting applications. Venture Lighting has built a reputation as a lighting technology market leader. Customers around the world rely on Venture's product innovation, superb quality, world-class service and outstanding technical support.



These same high standards are realized in our new range of LED lighting products that include LED lamps, retrofit kits, luminaires and more. With Venture LED lighting solutions you can be assured of the very best LED technology promising huge energy savings and longer life, all backed up by an unbelievable warranty. Venture Lighting is committed to providing the best LED and HID lighting solutions coupled with the very best service and support.

Venture LED Advantage



- Energy Saving
- Longer Life
- Superior Performance
- Easy to Install
- 5 Year Warranty
- All Weather
- Technical Support





Our Leading Products



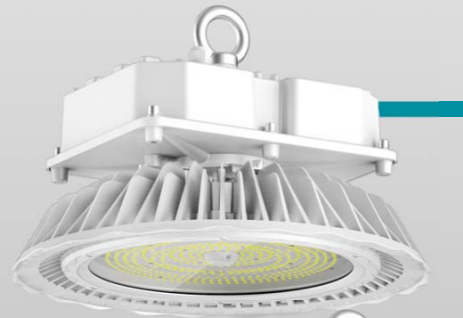
Modern Highbay



120-277V

<u>Wattage</u>	<u>Lumens</u>
90W	11400
150W	18900
200W	25000
300W	40108

- 0-10V Dimming
- IP65 Rated
- 5K Color
- Optics Lens Available
- Occupancy Sensors Available



347-480V

<u>Wattage</u>	<u>Lumens</u>
100W	12165
150W	18970
200W	24670

High Ambient Temperature



<u>Wattage</u>	<u>Lumens</u>
200W	24670



IP65



Real Comparisons: Highbay



The Hope Center, Perryville, Missouri



Commerce Highbay



Commerce

<u>Wattage</u>	<u>Lumens</u>
120W	14200
160W	18700
200W	23300

- 0-10V Dimming
- Damp Location Rated
- 4K Color
- Occupancy Sensors Available



Wave Linear Highbay



Wave Linear Highbay



<u>Wattage</u>	<u>Lumens</u>
90W	10100
120W	12900
150W	16500

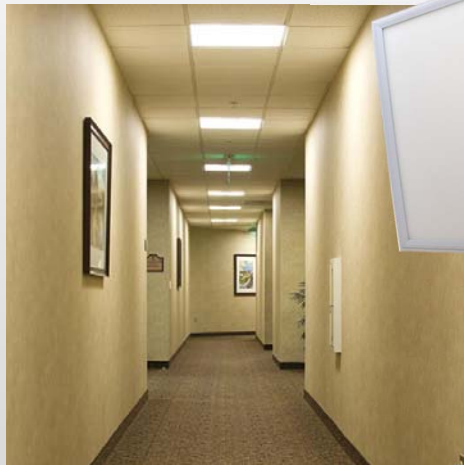
- Extruded aluminum heat sink housing and stainless steel hardware
- Universal 120-277V 50/60 Hz input
- 0-10V DC dimming standard to maximize energy savings
- (2) aircraft cables included with fixture for mounting
- Occupancy Sensors Available



IP65



LED Panels



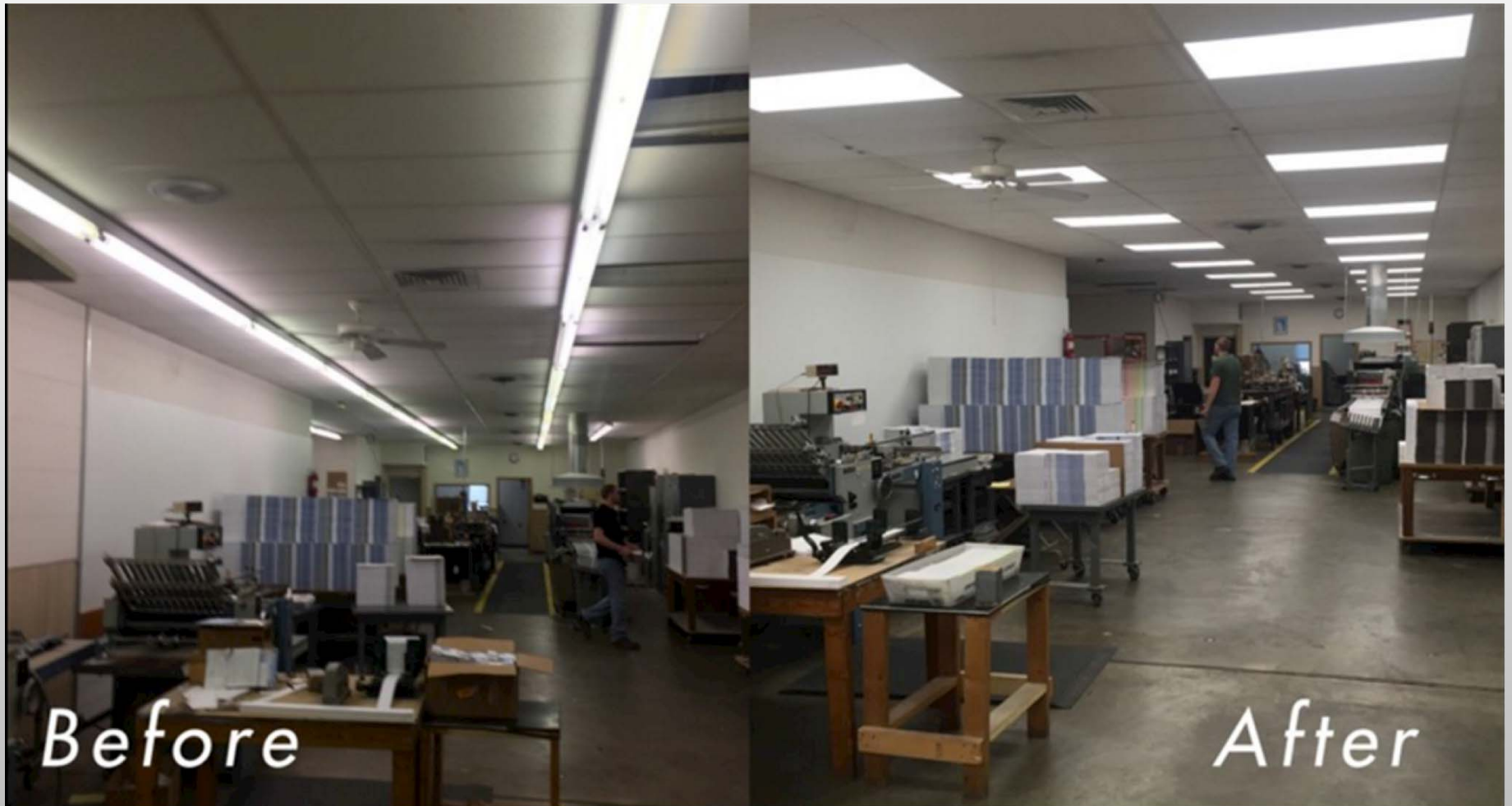
LED Panels

Size	Wattage	Color Temp.	Lumens
2x4	52W	5K	5650
2x4	52W	4K	5410
2x4	52W	35K	5800
2x2	40W	5K	4180
2x2	40W	4K	4192
2x2	40W	35K	4100
1x4	36W	5K	3600
1x4	36W	4K	3950
1x4	36W	35K	3600

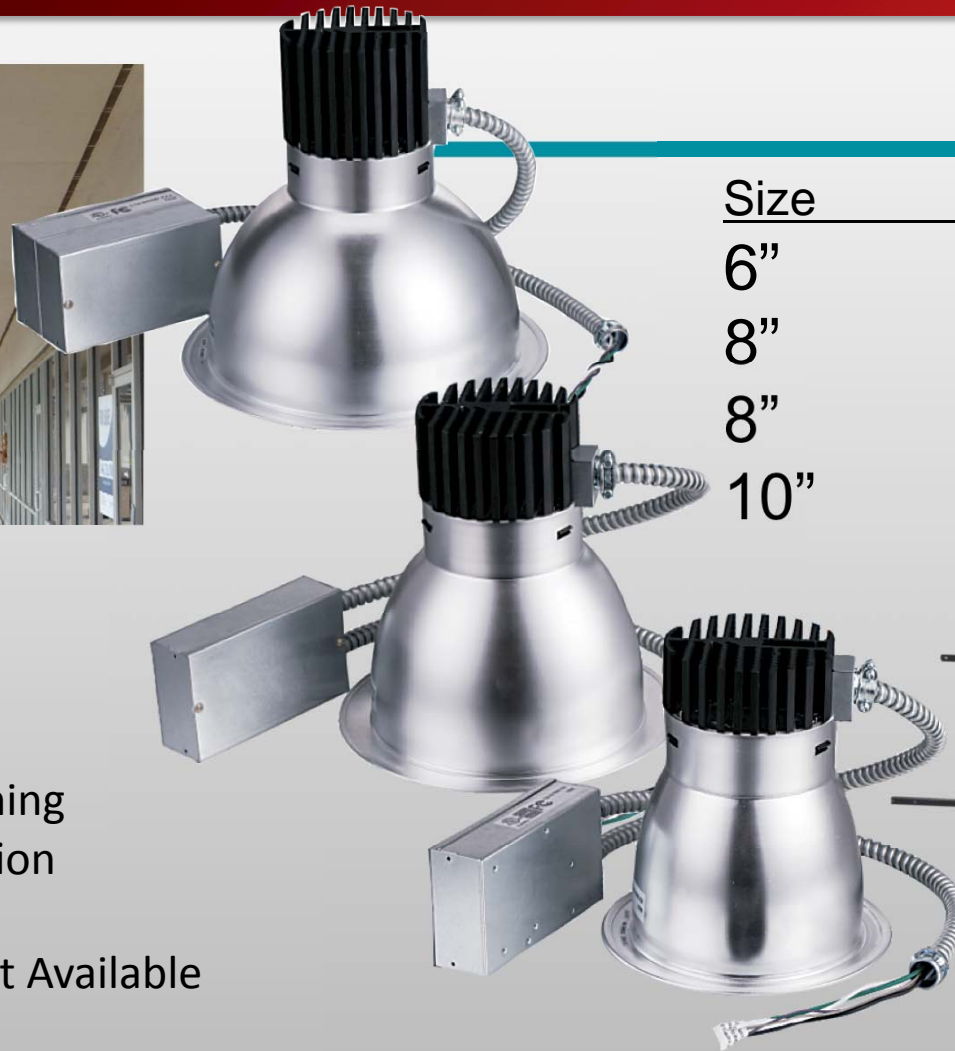
- Edge Lit
- IC Rated
- Available in 35K, 4K, & 5K
- Surface Mount Kit and Dry Wall Kit Available
- 0-10V Dimming
- Battery Backup



Real Comparisons: LED Panels

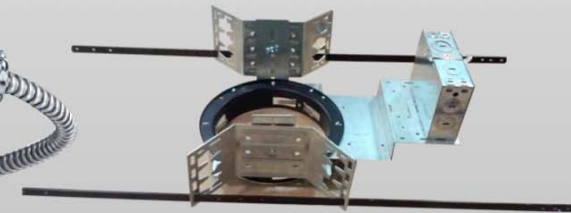


LED Recessed Downlight Updates



LED Downlights

Size	Wattage	Lumens
6"	18W	1440
8"	40W	2870
8"	54W	4100
10"	54W	3790

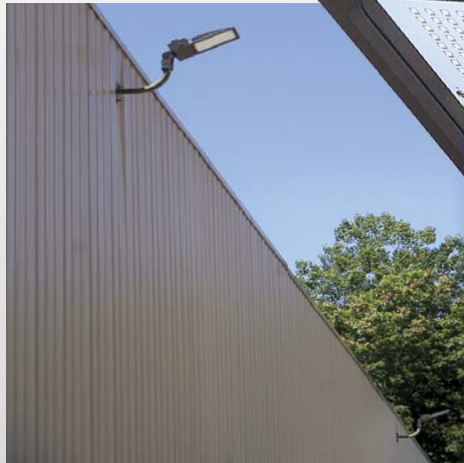


New Construction Kit

- 0-10V Dimming
- Damp Location
- 4K Color
- Housing Unit Available



VFlood Updates



VFlood

Wattage	Lumens
121W	14453
212W	25343

120-277V and 347-480V versions available

Accessories

- 10KV Surge Protection Built In
- Shorting Cap Included
- Additional Surge Protection Accessory
- 5000K
- Mounting Options Separate



Straight Arm



U-bracket small



Shorting Cap



Slipfitter



U-bracket large



Photocell



Surge Protector



Wallpacks and Floods



**Cardinal Health
Twinsburg, OH**

81W Defender
LED wallpacks,
and 212W VFlood
LED systems



Before



After

Area Lighting Fixtures



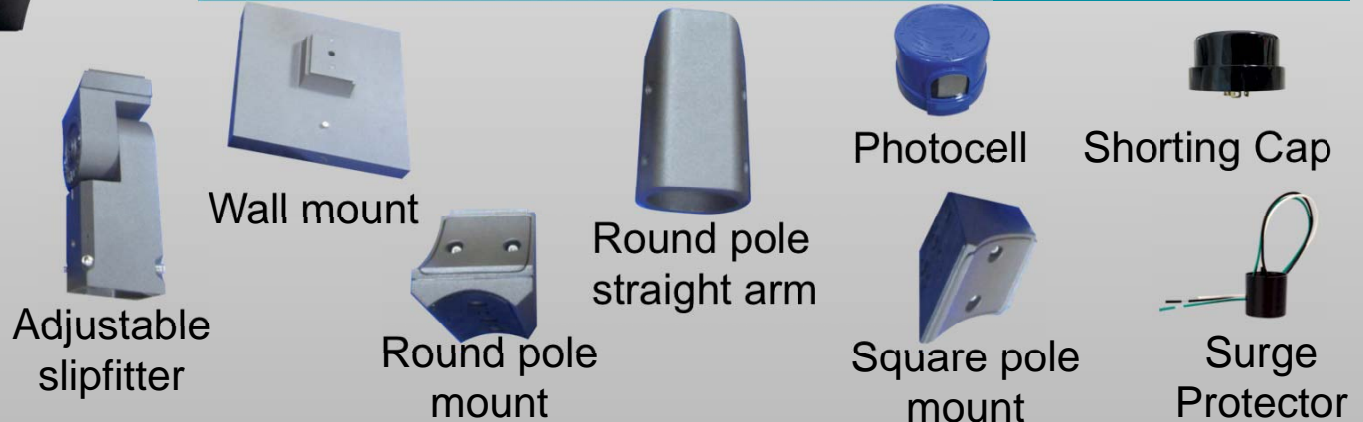
Environ

Wattage	Lumens
120W	13930 TypeV
150W	18831 TypeV
200W	25856 TypeV

Distribution Types Available
2, 3, 4, 5

Accessories

Optional motion sensor factory installed



Real Comparisons: Parking Lot



200W Environ
1000W MH fixtures
replaced with 200W
Environ LED in
Bayamon, Puerto Rico

Dusk to Dawn Fixtures



Dusk to Dawn

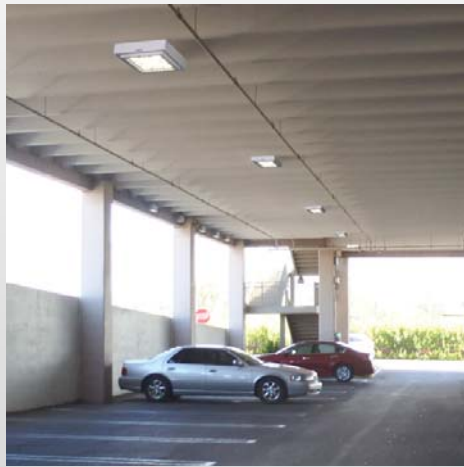
<u>Wattage</u>	<u>Lumens</u>
40W	4100

- Rated for wet locations
- 120-277V, 50/60 Hz input power
- Long life: 380,000 hours
- 0-10V dimming capability is standard

Mounting kit included



Parking Garage Fixtures



Parkway

<u>Wattage</u>	<u>Lumens</u>
41W	4576
54W	6142
72W	8126



Greenway

<u>Wattage</u>	<u>Lumens</u>
41W	4576
54W	6142
72W	8126

- Rated for wet locations
- 0-10V DC dimming standard to maximize energy savings
- Can be surface or pendant mounted
- 10KA surge protection

Wallpacks



Defender

Wattage	Lumens
44W	5010
81W	9525

- Defender – excellent life and lumens
- VWallpax – can be used as wallpack or flood



VWallpax

Wattage	Lumens
20W	1780
30W	2650
50W	5420
80W	8710



Real Comparisons: Building Exterior



**Shopping Center
Receiving Area**
400W MH Retrofitted
with 81W LED
wallpacks



Canopy Fixtures



- 10KV Surge Protection Built In
- Mounting Options Separate



Breezeway

Wattage	Lumens
23W	2696
41W	4498
54W	6161
72W	8364



Low Glare - Fairway

Wattage	Lumens
40W	4730



Pavilion

Wattage	Lumens
45W	4532
82W	9325

Recessed Canopy Fixtures



Cascade

<u>Wattage</u>	<u>Lumens</u>
23W	2696
41W	4498
54W	6161
72W	8364

- 10KA surge protection
- DesignLights Consortium® (DLC) qualified
- 5 year warranty
- Up to 76% Energy Savings
- Universal 120-277V 50/60 Hz input
- 0-10V DC dimming standard to maximize energy savings





Newest Additions



NEW: Vapor-tight



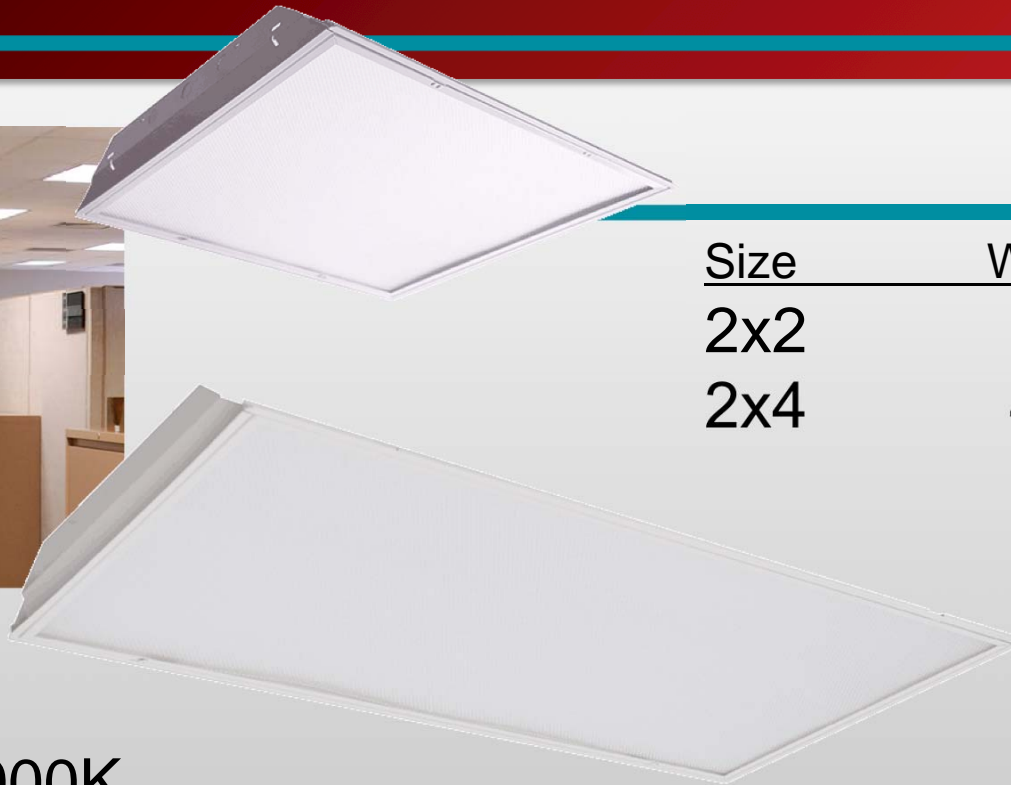
Vapor-tight

<u>Wattage</u>	<u>Lumens</u>
55W	7200

- 4ft Fixture
- Plastic Clips
- 0-10V Dimming
- Surface, Pendant, or Stem Mounting
- V-Hook included
- 4000K
- **In stock and available to ship today!**



NEW: LED Troffers



Troffers

<u>Size</u>	<u>Wattage</u>	<u>Lumens</u>
2x2	32W	3720
2x4	42W	5120

- 4000K
- Rated for damp locations
- 0-10V Dimming
- IC Rated
- **In stock and available to ship today!**



NEW: LED Volumetric Troffers



Volumetric Troffers

Size	Wattage	Lumens
2x2	26W	3275
2x4	48W	5970

- 0-10V Dimming
- 4K Color
- Damp Location Rated
- Works with Drywall Kits
- IC Rated
- **In stock and available to ship today!**



NEW: Linear Lighting



Wrap

Wattage

Lumens

42W

4550

- 4ft Fixture
- 0-10V Dimming
- Surface or Pendant Mounting
- 4000K
- **In stock and available to ship today!**

- 4000K
- In stock and available to ship today!



NEW: Flood Lighting Fixtures



VFlood Roundbacks

<u>Wattage</u>	<u>Lumens</u>
20W	2250
80W	9300



Accessories

- 4000K
- Rated for wet locations



U-bracket small



LED Lamps

Retrofit Lamps



Retrofit Lamps

<u>Wattage</u>	<u>Lumens</u>
8W	960
10W	1200
14W	1680
18W	2160
22W	2640
27W	3240
36W	4320
45W	5400
54W	6500
100W	11000

- Mogul and medium base
8W-22W: Medium Only
27W-54W: Medium & Mogul
100W: Mogul Only
- Available in 4000K and 5000K
- 120-277V; Bypass Ballast
- Mogul Based DLC Listed
- Fully Enclosed Rated; Damp Location Rated



T8 Lamps



Ballast-free **LED T8 Lamps** (Fluorescent ballast bypass)



Wattage	Length	Lumens
9W	2 ft.	925
18W	4 ft.	2000

Note: Direct wire to 120-277V input

Instant Start Fluorescent Ballast Compatible
LED T8 lamps (Direct replacement)



- Change just the lamp and start saving
- Direct wire, Instant Start Ballast compatible, or both



Wattage	Length	Lumens
17W	4 ft.	1926

Note: Instant start ballast only

All Fit Ballast Compatible



LED T8 lamps (Direct replacement or ballast bypass)



Wattage	Length	Lumens
18W	4 ft.	2212

Note: All Fit lamps are Instant start, Programmable and Rapid Start ballast compatible and can be wired directly to 120-277V by bypassing the fluorescent ballast



Lighting Controls

Take Control of Your Lighting



WIRELESS LIGHTING CONTROL



INGENIOUS CONTROL



LeafNut for Outdoor



BranchNode and UniNode

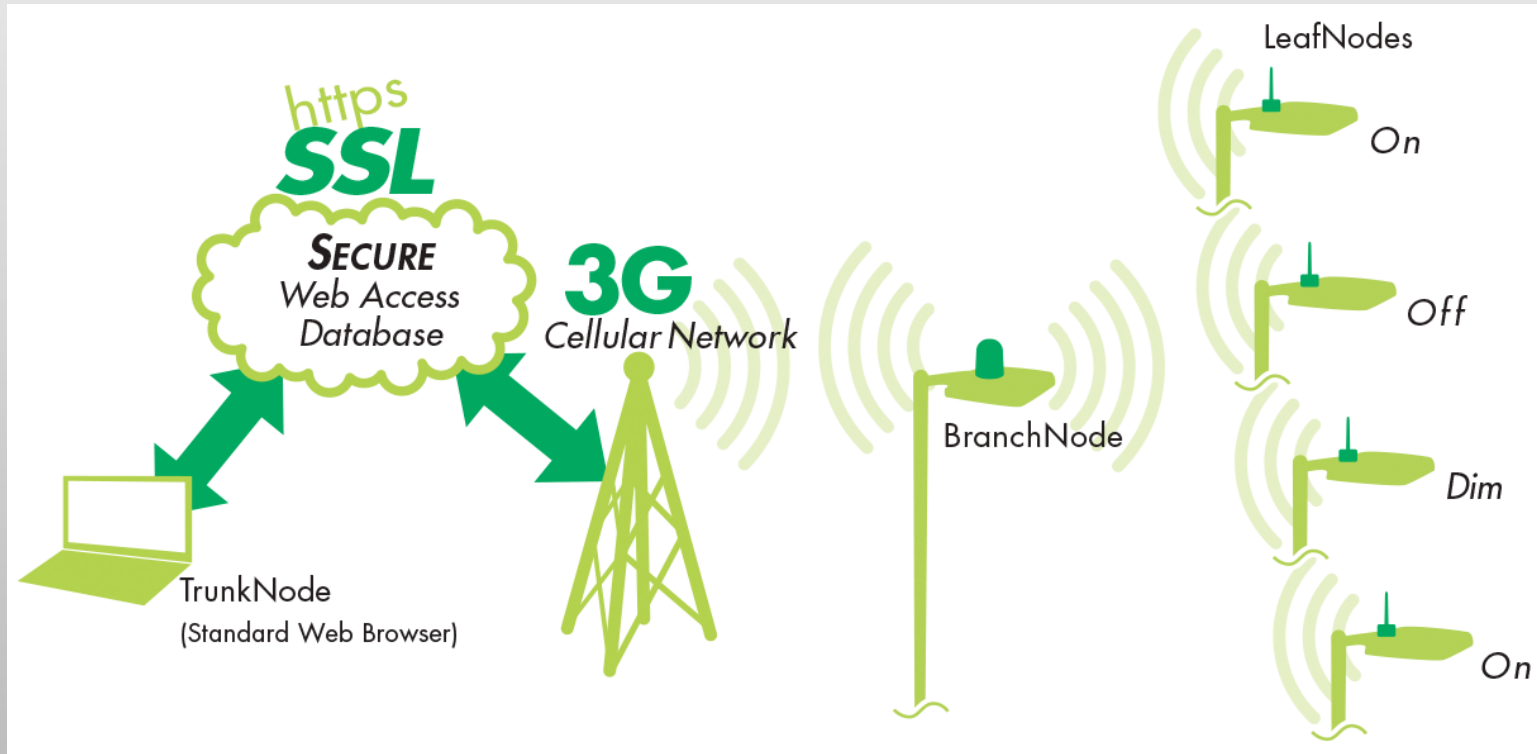


- **No software** to buy or download
- **Web based** – access from any computer, anytime
- Multi-level Username and Password **protected**
- **Real Time** Leaf Node/Fixture testing
- **Energy** Use reports
- **Live Status** Google Mapping via GPS
- **24/7** Control and monitoring
- Remote multi-site monitoring (many properties on one website)

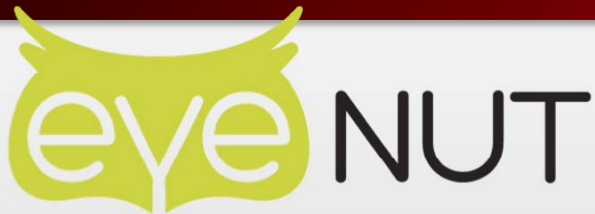
LeafNut for Outdoor



How it works



EyeNut for Indoor



INGENIOUS CONTROL

Benefits

- Wireless and ideal for retrofit as well as new construction
- Easy to install without hiring an expensive specialist engineer and easily configurable
- Intuitively controllable through a graphic user interface
- Suitable for multi-building or multiple site control as well as for small installations
- Monitoring and reporting capability with sophisticated energy mapping
- Able to integrate with building management systems
- Compatible with other control gear

Components



EyeNut Hub



EyeNut Gateway



EyeNut Adaptor/Driver



Switches

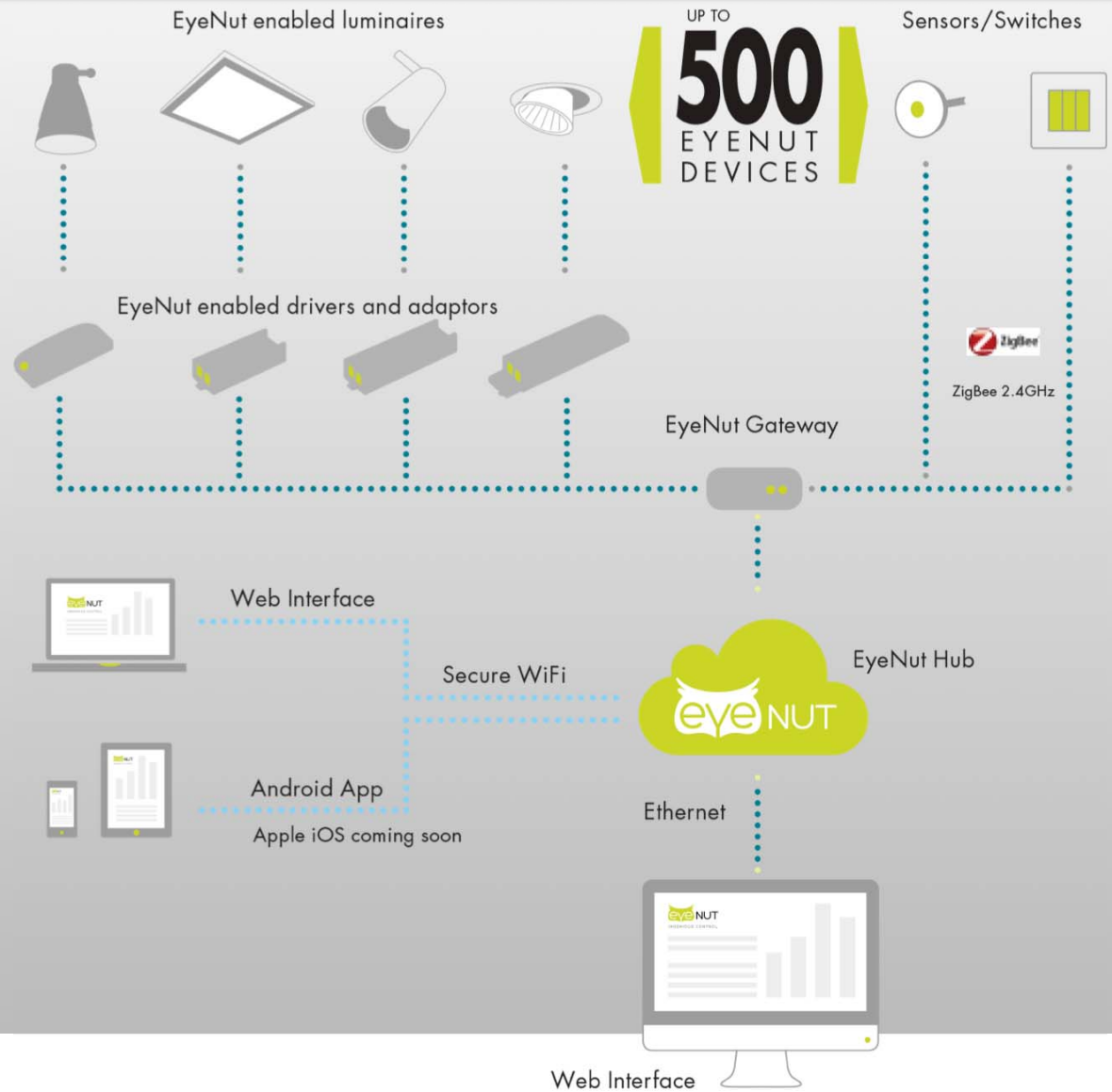


Sensors

EyeNut for Indoor



How it works





Marketing Support

Point-of-Purchase Display

P-O-P Display Program



- FREE pre-assembled point-of-purchase display shelf unit with \$5,000 minimum order
- 10% discount on initial order
- FREE Freight on ALL orders through 2017
- 90 Day Terms (applies to display program orders only)
- Product exchange program is available for slower moving products
- Special pricing
- Venture Counter Day once unit is installed





Coming Soon!

Coming Soon!



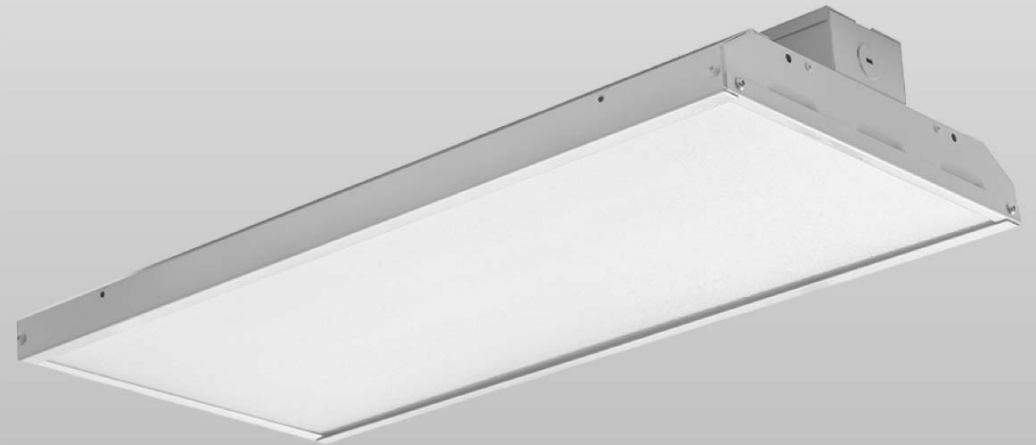
- Directional Retrofit Lamps
54W and 115W Type 5
Distribution
- High lumen Environ area
fixtures



Coming Soon!



- 150W Gas station canopy
- Linear Highbay



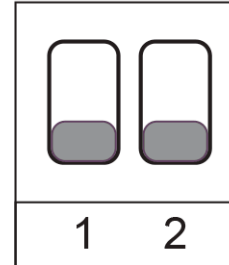
Coming Soon!



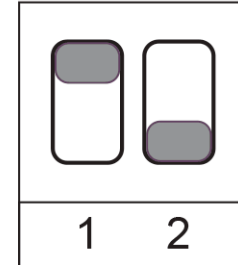
- 3-Color switchable LED Panels
- And more!



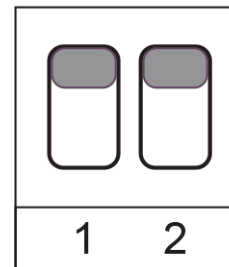
Switch Position:
LED Output OFF



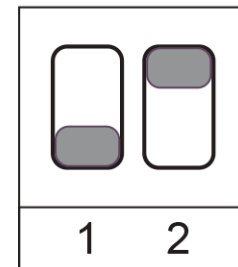
Switch Position:
3500K CCT



Switch Position:
4000K CCT



Switch Position:
5000K CCT



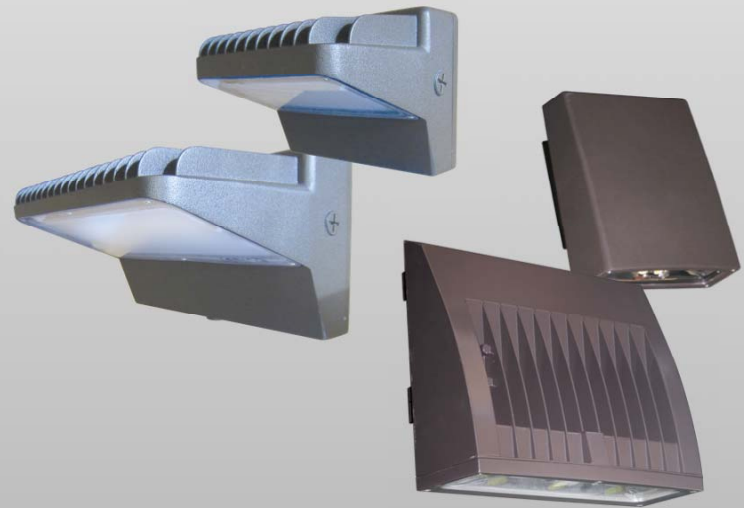


Incentives

Incentive Programs



- Point-of-Purchase display program
- Increased Rebate based on number of POP displays
- Freight Policy based on Total Sales
- Wallpack spiff



HID Push



- Reduced Pricing for high volume product
- Increase replacement business
- New Pricing and Catalog Coming Soon





The Venture LED Assurance

Warranty Information



Warranty on all LED Fixtures

5 Years



Warranty on all LED Retrofit Kits

5 Years see website for details



Warranty on LED Lamps

T8 lamps **5 Years** 50,000 hours life, see website for details

Retrofit lamps **5 Years** 50,000 hours life, see website for details



**Professional Grade LED
from The Leader in HID**